



Define and deliver *your way*

One platform to connect knowledge, process and delivery



World-class project delivery playbook



Learn more at
methodgrid.com

Deliver with confidence

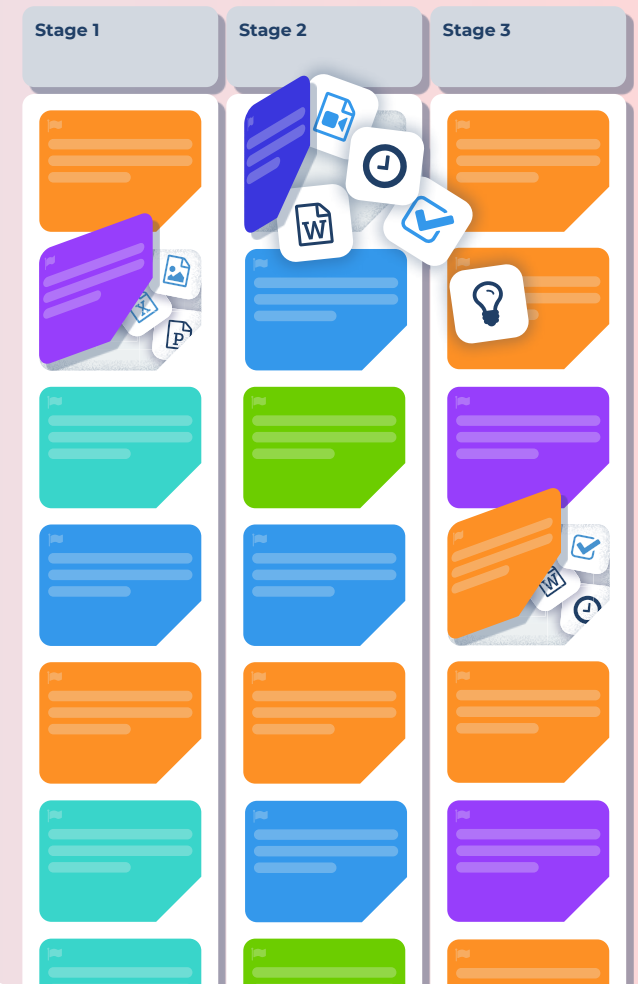
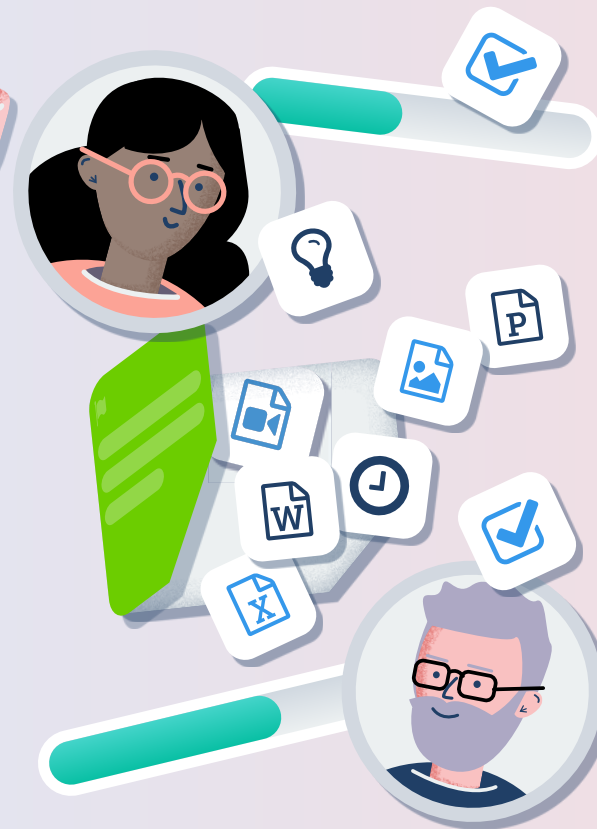
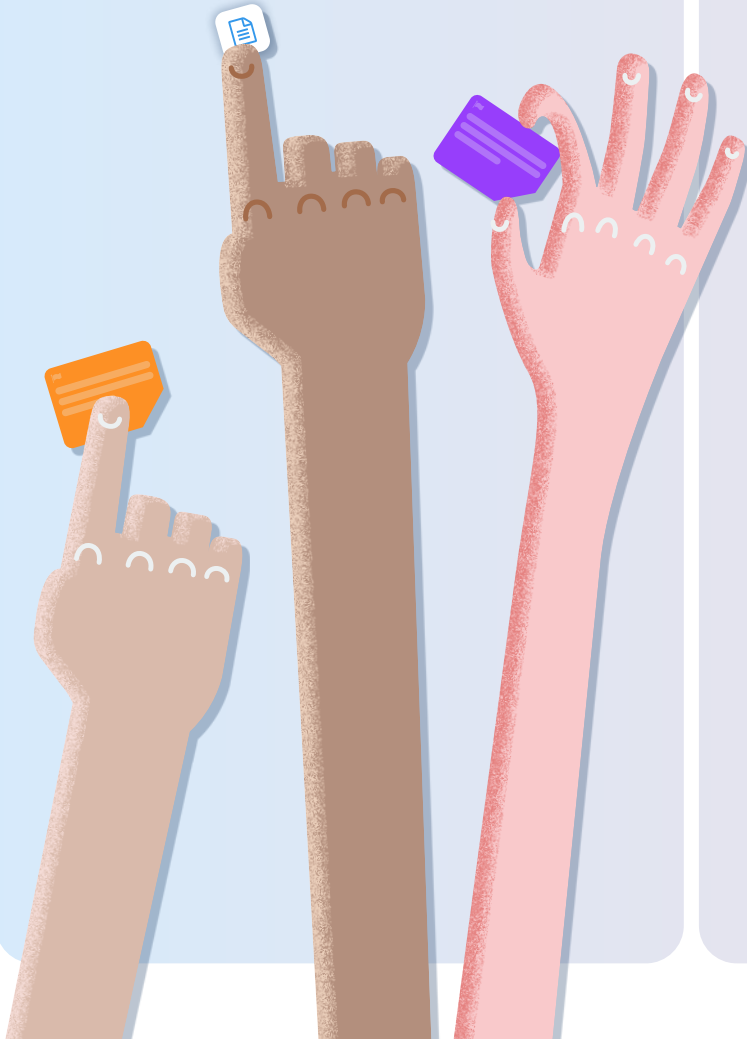
Build a repeatable, tailored approach to delivery - ensuring every project tracks and evidences compliance to your way of working.

Connect your teams

Improve collaboration and understanding across teams, suppliers, and clients by aligning ways of working on every project.

Deliver, improve, repeat

Build a repeatable approach to delivery. Track and assure every project, so your ways of working evolve with every project.




Avoid the shelfware trap

Don't let your hard work gather dust. Bring processes and procedures to life with playbooks, built by you - no code required.

Lead the way

Scale your business with a proven platform, a smarter way to work, with the services you need to implement and drive success.

**Anti-bribery and corruption policy**

🕒

0/2


Description

The Anti-Bribery and Corruption Policy ensures that all employees, suppliers, and partners of Metra Living conduct business with the highest ethical standards. This policy prohibits any form of bribery, corruption, or unethical behavior in business transactions and interactions. It outlines reporting mechanisms for suspected corruption, guidelines for avoiding conflicts of interest, and strict compliance with the Bribery Act 2010. Regular training and audits are part of the policy to ensure awareness and enforcement.


Content development

0/2

☒ *Draft Policy Element and Policy Document*

 🕒


☐ Policy Element and Document - Approved

 🕒

Objectives


Key objectives for this policy:

Explainer video

**Anti-fraud training**

Training

Integrated e-learning about the policy and procedures.

**Anti-fraud training e-learning course**

START COURSE →



Some testimonials from *our clients* ...

Learn more at
methodgrid.com



Mike Wright - Director
Network Rail
Programme Management

I have the privilege of leading a team that is at the forefront of a really awesome initiative. In partnership with **Method Grid** we embarked on a journey to digitise Network Rail project management framework PACE. This marks a significant milestone not just for us at Network Rail, but for the entire industry. The future of project management is collaborative and innovative. Together with **Method Grid**, we are paving the way for a more interconnected industry.



Stephen Rose
SSE Renewables
Head of Completions and Commissioning,

When we initially set out to create a playbook, we wanted more than just another reference document. We needed a living, breathing tool that could help our teams actively manage compliance and quality. Frankly, I expected the process to take six months. That we did it in six weeks - and with such impact - speaks volumes about the **Method Grid** platform and team. It's been a game-changer for us.



Monika Graham - Director
Oxford Brookes University
Major Estates Capital Project Office

Method Grid has enabled my busy project office team to move from disparate individual systems to a consistent one-team, fully auditable assurance of all estate works at the university. This is improving project oversight which, in turn, is starting to build confidence and trust in reliably delivered projects.

Some of
our clients

Amey

gleeds

mace

NetworkRail

OW
OCEAN WINDS

OXFORD
BROOKES
UNIVERSITY

sse
Renewables

WARD
WILLIAMS