



UniPhi is an award winning, cloud-based Project and Portfolio management system, known for an adaptable software configuration and a user-friendly interface.

“



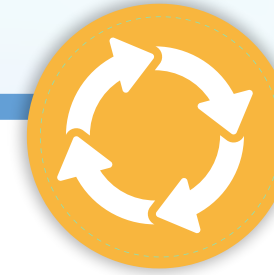
Global and well established software company, with 20 years of experience.



Powerful project and portfolio management solutions.



Designed as a *'versatile digital hub.'*



A single *'source of truth,'* connecting teams to step out of their silos and work together.



Experienced, professional and dedicated customer success team.

”



UNIFIED WEB APPLICATION

A single, central platform that connects teams, processes and data without the need to switch platforms.



MOBILE APPS ACCESS

Available on Android and iOS apps.



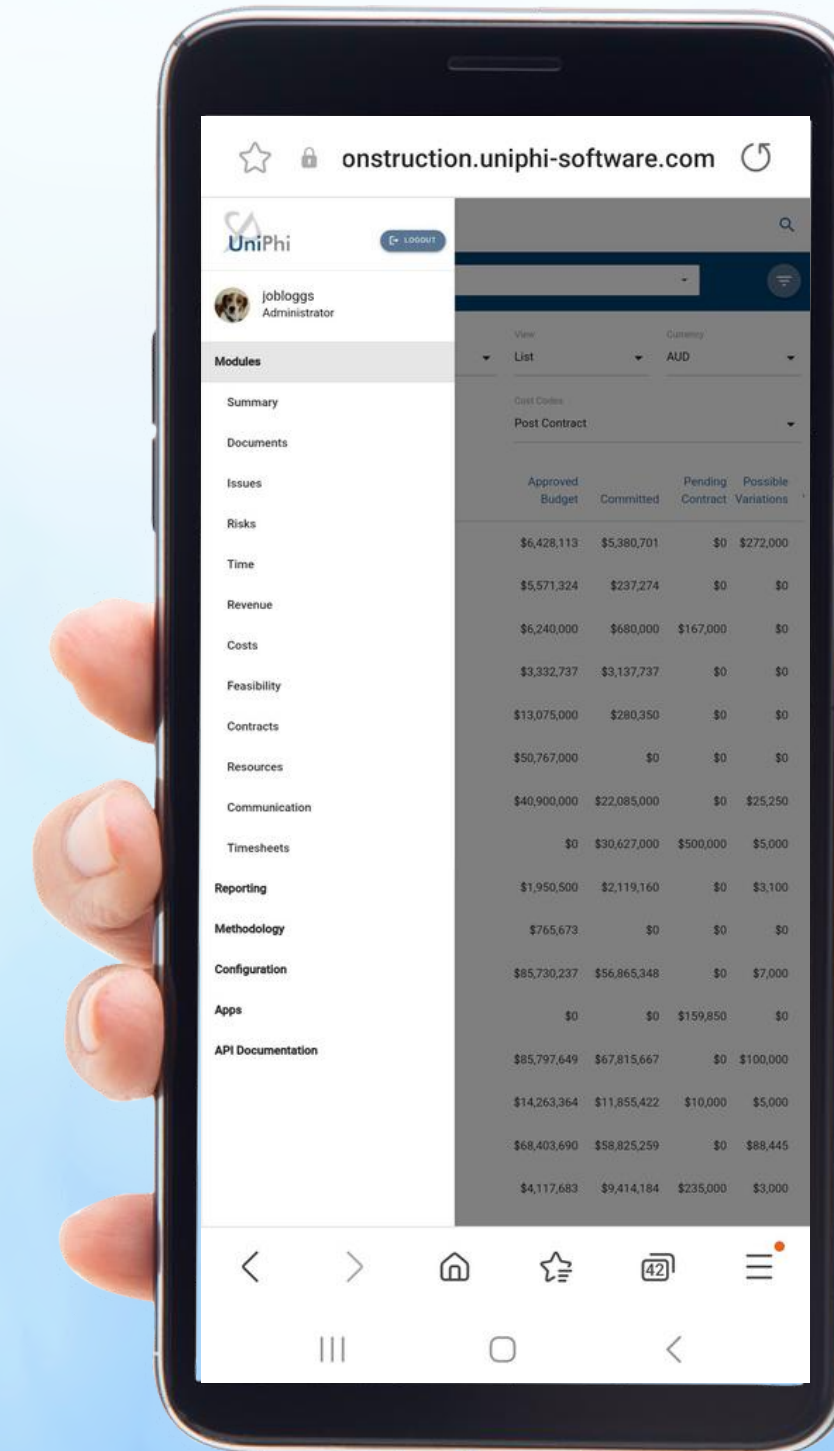
MICROSOFT OFFICE INTEGRATION

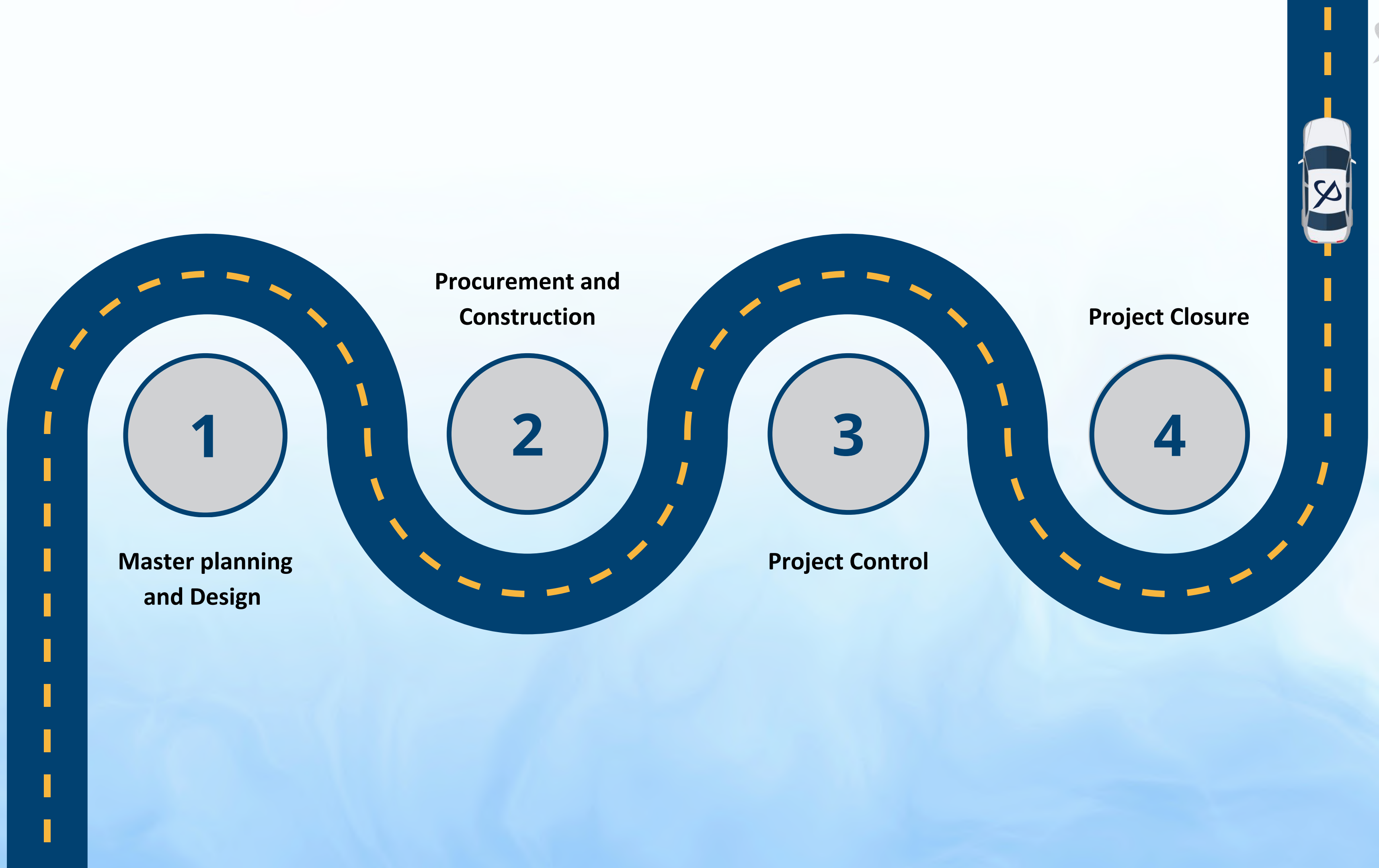
Connects with MS Office tools, including Outlook.



SYSTEM INTEGRATION

Connects with various third-party systems, Accounting, CRM and PM systems. For more information, refer to page 09.







Summary **Documents** Issues Risks Time Revenue **Costs** Feasibility Contracts Resources Communication Timesheets **Dashboards**

All Projects

Cost Codes: Post Contract Actuals To: Dec 2024 View: List Currency: AUD Charts:

Cash Flow

— Budget — Actuals — Forecast

Contracted Cost Forecast

- Design Fees
- Authority Charges
- Consultants
- Contingency
- Construction
- Headworks & Charges
- Client Cost

Actuals

Forecast Remaining



Projects

- Programme
- Digital to-do lists
- Timelines and milestones



Documents

- Centralised storage and management of documents and files
- Invoices
- Customisable templates



Issues and Risks

- Customisable risk framework
- Automated workflows
- Configurable email notifications



Cost Management

- Cost control
- Budget tracking
- Benchmarking and cashflow



Contracts

- Estimates and agreement
- Accurate and simplified variation management
- Contract administration



Resources, Scheduling

- Task allocation
- Timesheets
- Leave



Reporting

- Customised progress reports
- Dashboards and status updates



Communication

- Internal team messaging
- Client updates
- Third-party collaboration
- Document sharing

Unlock Efficiency



Find information **faster**



Solve problems **quicker**



Access **anywhere**

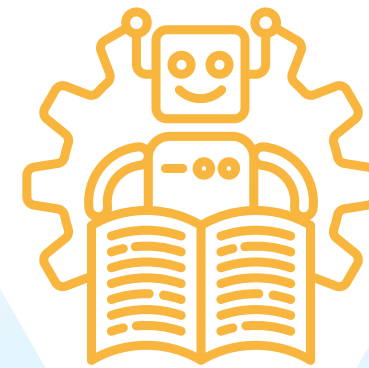


Progress in **real time**

Reduce manual tasks through intelligent **automation.**



Take away the chaos of juggling multiple apps by **centralising** tools, data, and communication.



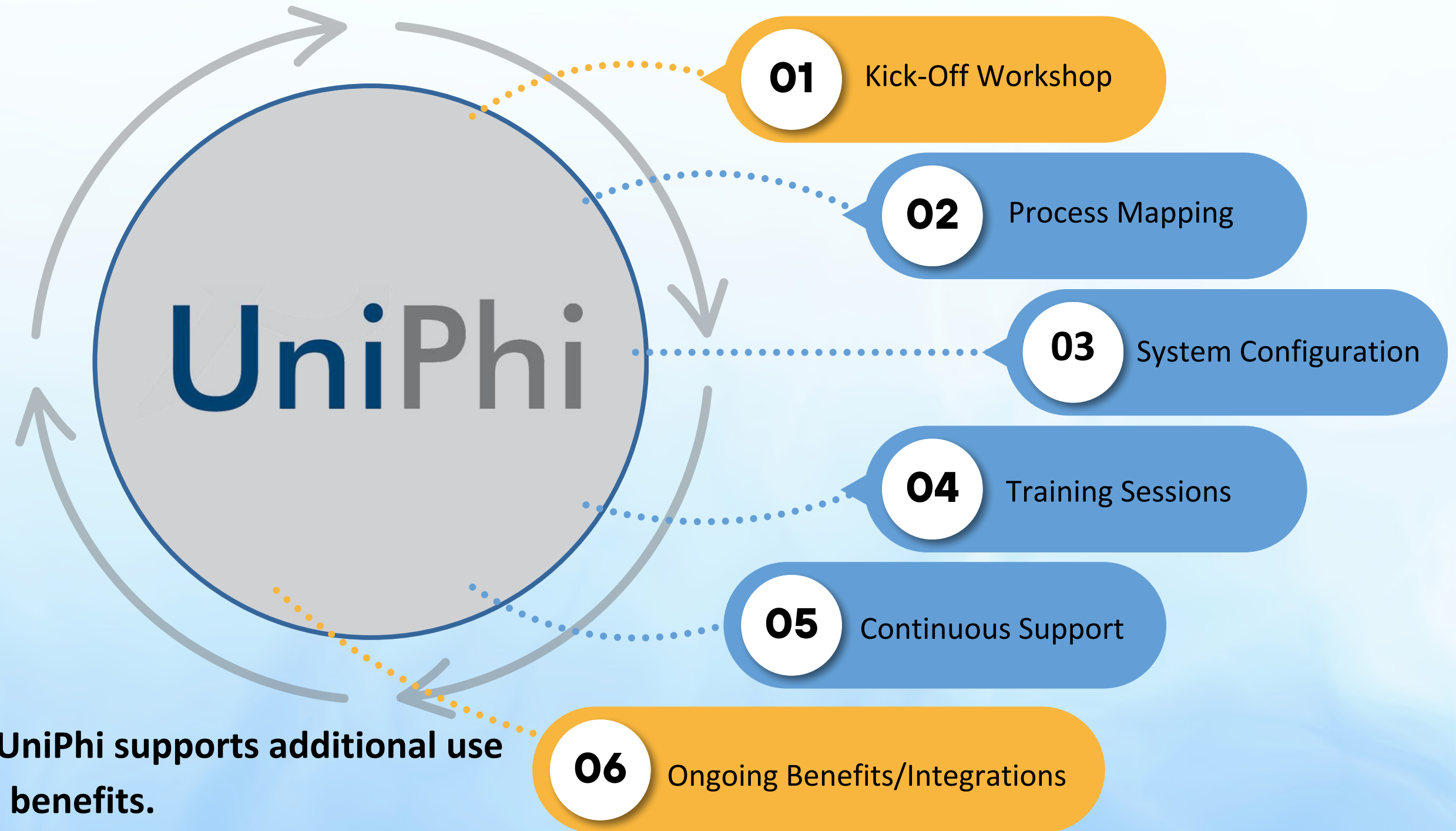
Access to **real-time** insights = good decisions.

UniPhi is unlike anything you've used before.

- Brings all your work together - tasks, data, files, collaboration, and reporting. UniPhi's adaptable software scales with you. Track and manage schedules, budgets, and resources, while smart reports keep you ahead.
- Automate routine tasks and get live insights. Celebrate those important milestones, achieve client goals and meet deadlines and budgets, whether you're on a project, managing from the client-side or collaborating in joint ventures and property developments.
- And for benchmarking? Measure performance against industry standards all through UniPhi software solutions.



- ✓ Engage stakeholders at all levels to ensure smooth implementation and maximise value.



- ✓ After the initial rollout, UniPhi supports additional use cases to deliver ongoing benefits.



UniPhi **integrates** with all the solutions below.



UniPhi **replaces** all the solutions below.



EMAIL

support@uniphi.com.au

Reach out to us via email for any support queries.

Contact our support team directly by phone.

PHONE

1300 79 48 68



Knowledge Base <https://knowledge.uniphi-software.com/>

Access our comprehensive data base of training material and informational articles.




@uniphisoftware



@UniPhi




 Ming

How secure is my data?

Reply


A: UniPhi is a very secure and powerful system, capable of handling vast amounts of data and users. 🚀

 Olivia

Is UniPhi easy to use?

Reply

A: Yes! UniPhi has an intuitive, easy to navigate interface, designed for everyone!

 Aditya

How will I stay updated? 😬

Reply

A: UniPhi sends customised email notifications, so you're always in the loop!